

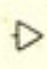
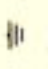

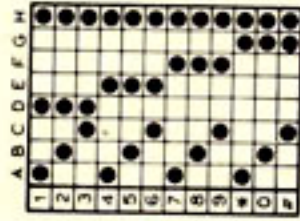


DATA #102

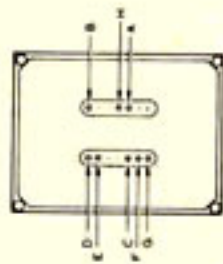
**SCHEMATIC OF THE
HEATHKIT®
MICODER™II
MODEL HD-1984**

NOTES:

1. REFER TO THE "CIRCUIT BOARD X-RAY VIEW" FOR THE PHYSICAL LOCATION OF PARTS.
2. RESISTORS ARE 1/4 WATT, 10% TOLERANCE UNLESS OTHERWISE INDICATED. RESISTOR VALUES ARE IN OHMS (K=1000, M= 1,000,000).
3. DC VOLTAGE MEASUREMENTS WERE TAKEN WITH A HIGH INPUT IMPEDANCE VOLTMETER FROM THE POINTS INDICATED TO CIRCUIT BOARD GROUND. VOLTAGES MAY VARY ±10%.
4.  SYMBOL INDICATES A DC VOLTAGE WITH NO TONE BEING PRODUCED AND PTT SWITCH ACTUATOR DEPRESSED.
5.  THIS SYMBOL INDICATES A DC VOLTAGE WITH KEY "1" PUSHED AND PTT SWITCH ACTUATOR DEPRESSED.
6.  THIS SYMBOL INDICATES CIRCUIT BOARD GROUND.
7.  THIS SYMBOL INDICATES COMMON GROUND.
8.  THIS SYMBOL INDICATES A CONNECTION TO THE CIRCUIT BOARD.



● INDICATES TERMINAL SHORTED TO COMMON WHEN KEY IS DEPRESSED.
TERMINAL H IS COMMON



IDENTIFICATION OF KEYBOARD PINS


Low Tone (Hz)	High Tone (Hz)
697	1209
770	1336
852	1477
941	
	1
	2
	3
	4
	5
	6
	7
	8
	9
	0
	#

Two-tone output frequencies from the Micoder.

TA Signal Key board

MONSTER PIN
 14
 13
 12
 11
 3
 4
 5

Vertical PAD


Horiz PAD

 Reverse "5" x "17"
 as
 wyes
 shown

Copyright © 1977
 Health Company
 All Rights Reserved
 Printed in the United States of America
 Part of 595-1963-01

